

LIFE PINNARCA

LIFE NAT/ES/001265



DELIVERABLE DE1.4

PUBLIC DATABASE WITH THE
INFORMATION PRODUCED IN THE
PROJECT

Date 31/05/2023



**Institut de Recerca i Tecnologia
Agroalimentàries**
IRTA

INDEX

1. ABSTRACT	1
2. PUBLIC DATABASE	1
3. MAINTENANCE AND UPDATING OF THE PROJECT DATABASE	5

List of figures:

Figure 1. Sections presented in the main menu of “Resources”	1
Figure 2. Sections presented in the submenu of “Documents”	2
Figure 3. The “Public Database” with some of the open access documents classified by the working area.....	5



1. ABSTRACT

The design and implementation of online tools and social media is necessary for the dissemination and transferability of any project to a wide public. Consequently, having an updated public webpage was thought to be mandatory in order to develop and improve the communication and dissemination tasks on the PINNARCA project, so information can be accessible by general public and scientific community. This knowledge is being introduced into a “Public Database” hosted on the PINNARCA webpage (<https://www.lifepinnarca.com/>), which can be accessed via the “Resources” section in the main menu. This database has been created specifically for the dissemination of the data, information and knowledge generated in the project, so it is open access to anyone who needs it and will be constantly updated with all the information provided by the project partners.

2. PUBLIC DATABASE

After landing in the “Home section” on the webpage, the main menu can be found at the top of the page. In the section of “Resources”, a new submenu appears in the panel where these next sections are revealed: “Video gallery”, “Photo gallery”, “Audio Library”, “Links”, “Documents” and “For Kids”. The “Resources” section is where all the documentation generated by the project such as databases, photographs, videos, radio interviews and other information is constantly published, which show basic and specific information about the actual situation of the project (Figure 1).



Figure 1. Sections presented in the main menu of “Resources”

By clicking on “Documents”, a new menu in a new page is shown where other sections can be selected: “Official Dissemination Material”, “Leaflets and Brochures”, “Public Database”, “Webpage QR Code and PINNARCA Logo”, “Project Deliverables” and “Related Scientific Publications” (Figure 2).

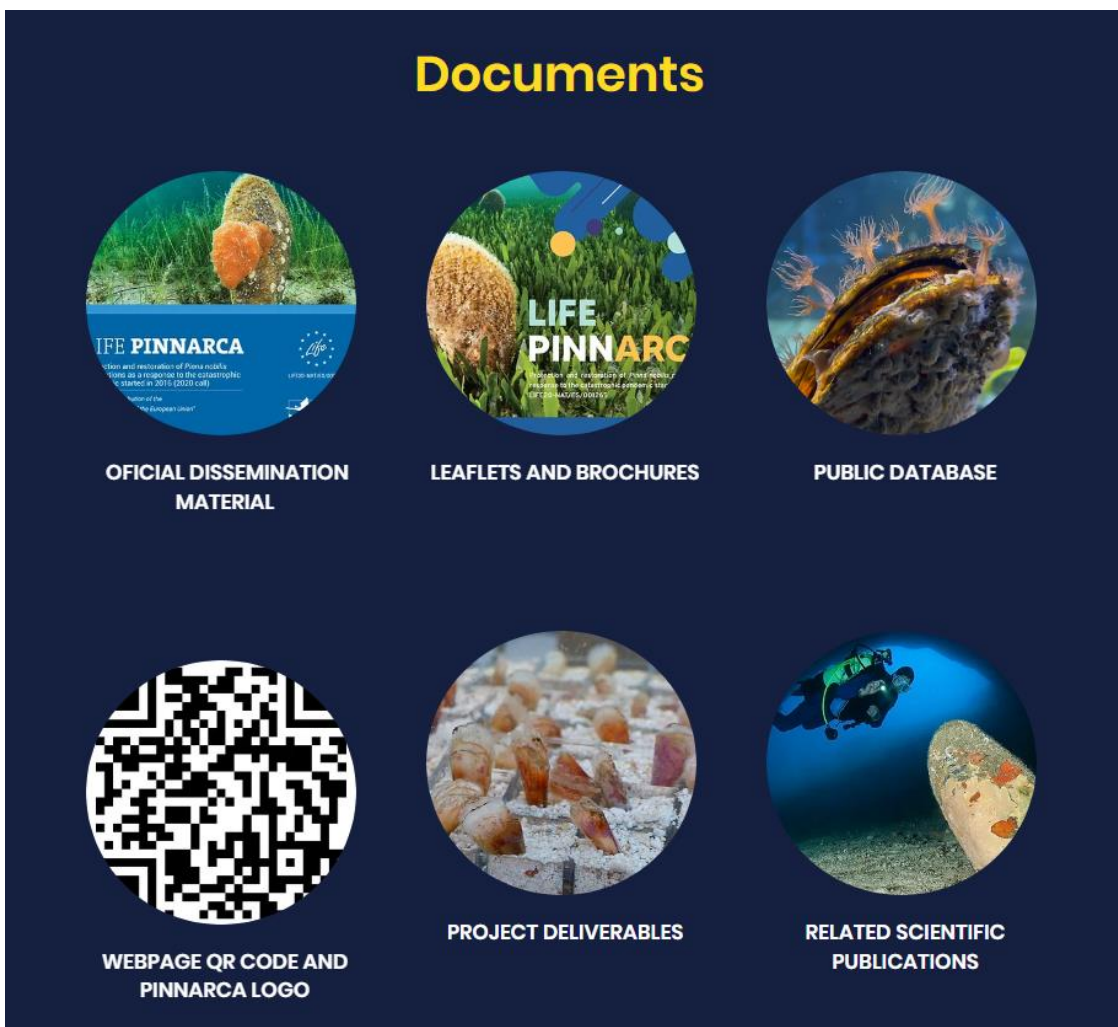


Figure 2. Sections presented in the submenu of “Documents”

Precisely, after clicking in the “Public Database” icon, a public database is being implemented and constantly updated with the complete information about the project. By scrolling down, we can find the different documents related to each working area of the project, so different data from different zones will be recognized (Figure 3).

Here is the information and data generated by each partner, as spreadsheets, tables with raw data, summary of results or reports, concerning information about physicochemical variables in the different working areas, width of individuals, surviving population data, follow up of the mortalities, etc. Sensible information that could lead to the location of *P. nobilis* individuals, like coordinates or maps indicating hotspot areas have been eliminated for safety reasons.

In addition, a private database has also been created, where users must sign up with a mail and a password on the LIFE PINNARCA web, and then they are able to download and share delicate information in the private sections only with the partners who have access.

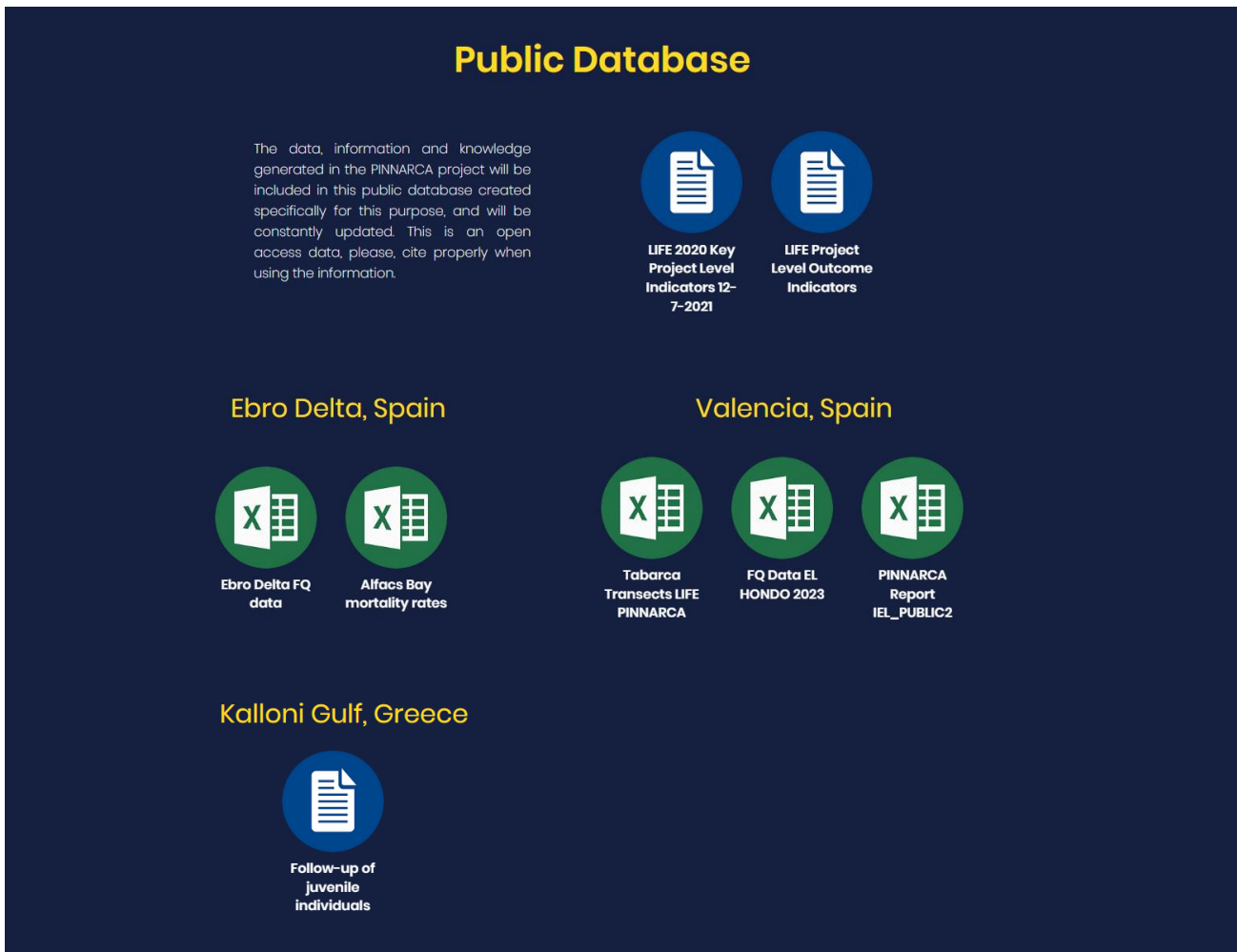


Figure 3. The “Public Database” with some of the open access documents classified by the working area.

3. MAINTENANCE AND UPDATING OF THE PROJECT DATABASE

Currently, the “Public Database” section is active, although it will be under progress until the end of the project due to the constant information update. The database will be updated and maintained by IRTA personal with the constant support of the coordinators and of the partners. The update of the material will be when the partners provide the data for the complementation of the database when finishing the tasks described in their actions, ensuring the constant transferability of the project results.